

1702

Workhouse opened at Clerkenwell

1716

First Schoolmistress appointed

1746

'Account of the Rise, Progress and Present State of the School and Workhouse,' by T. Beven

1706

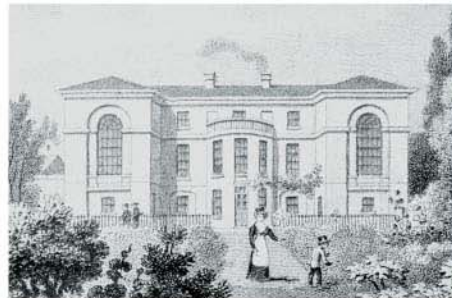
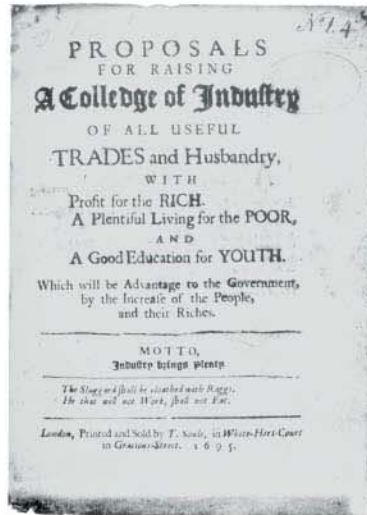
First Schoolmaster appointed

1718

Proposal to develop 'boarding-school' and change name to 'College'

175

Dr. Jc new s



Original proposal for a College of Industry

1786 School moved to Islington Road



1825 School removed to Croft block was the superintendence remained until it was built. The entrance gates now to Leicester Building.



f the Rise,
 and Present
 School
 ouse,
 n

1758
 Dr. John Fothergill's
 new scheme of work

1774
 Period of
 reform began

1780
 First Printed Rules,
 first Committee examination
 of children's school work

1786
 School moved to
 Islington Road -
 separation of School
 and Workhouse

1795
 1d. a week pocket
 money given

1799
 First systematic
 School time-table
 for boys

1805-1810
 Elizabeth
 one of the
 women
 visitors



1879
*Croydon School photograph
 before relocation to
 Saffron Walden*



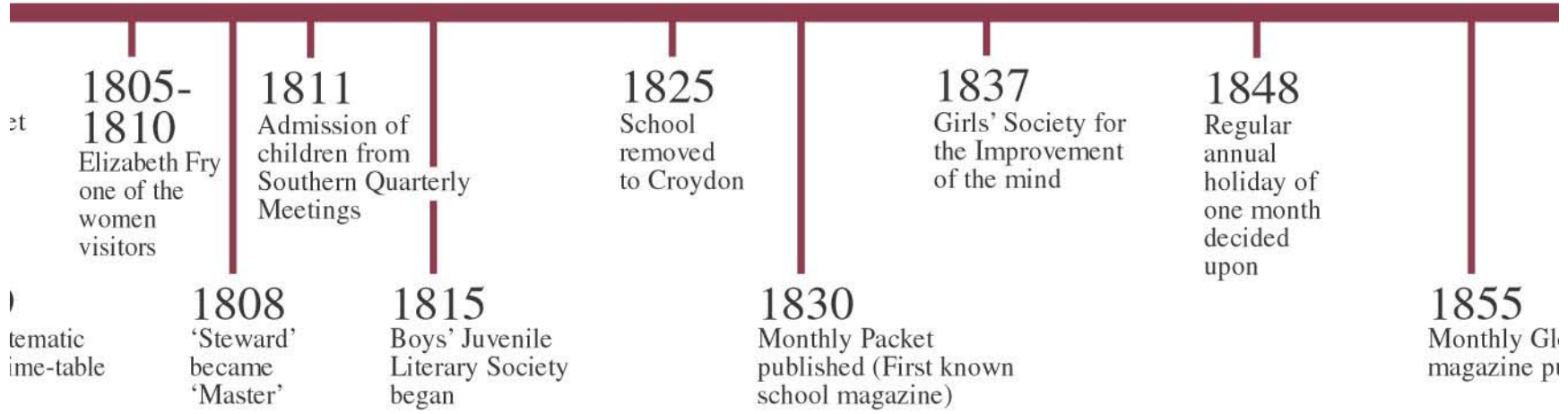
1879
*Saffron Walden School
 on completion.*



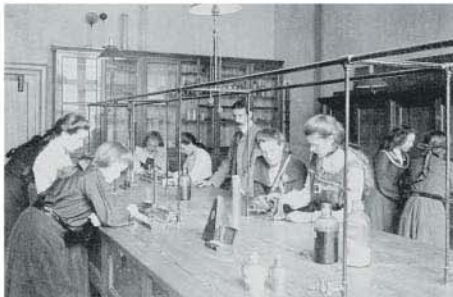
1879
*The school
 now relocated
 in the new purpose
 built buildings*



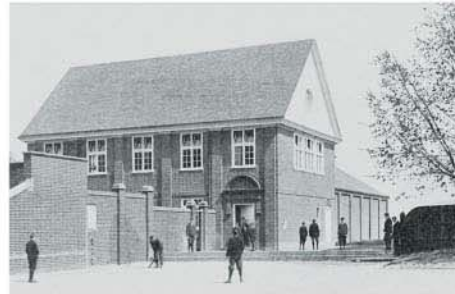
1815
 School removed to Croydon. The central
 clock was the superintendent's house and
 rained until it was bombed in 1940.
 The entrance gates now form the entrance
 to Leicester Building.



1879
The school was relocated to the new purpose built buildings

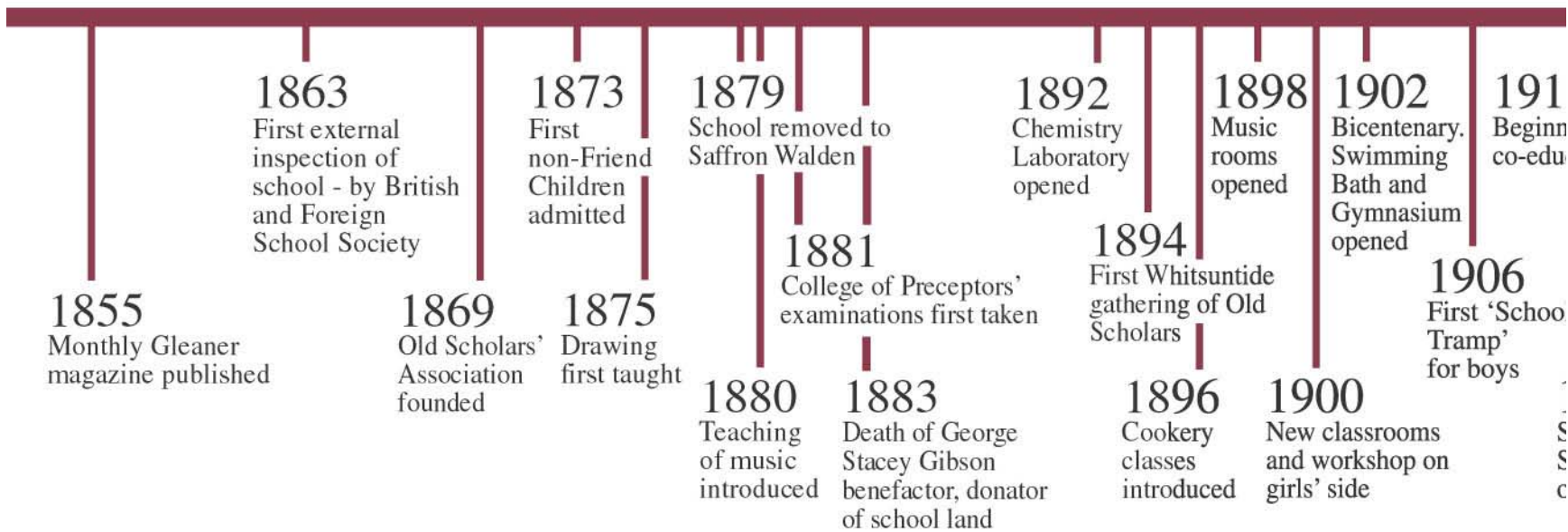


1900's
Physical Laboratory

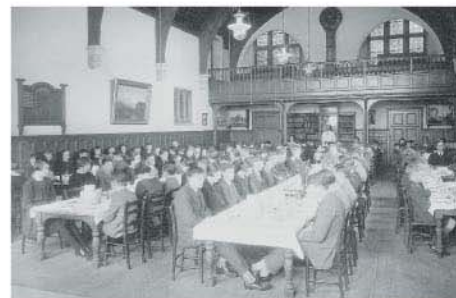


1902
Bicentenary year. Swimming Bath and Gymnasium opened





1900's
*The Lecture Hall
now library*

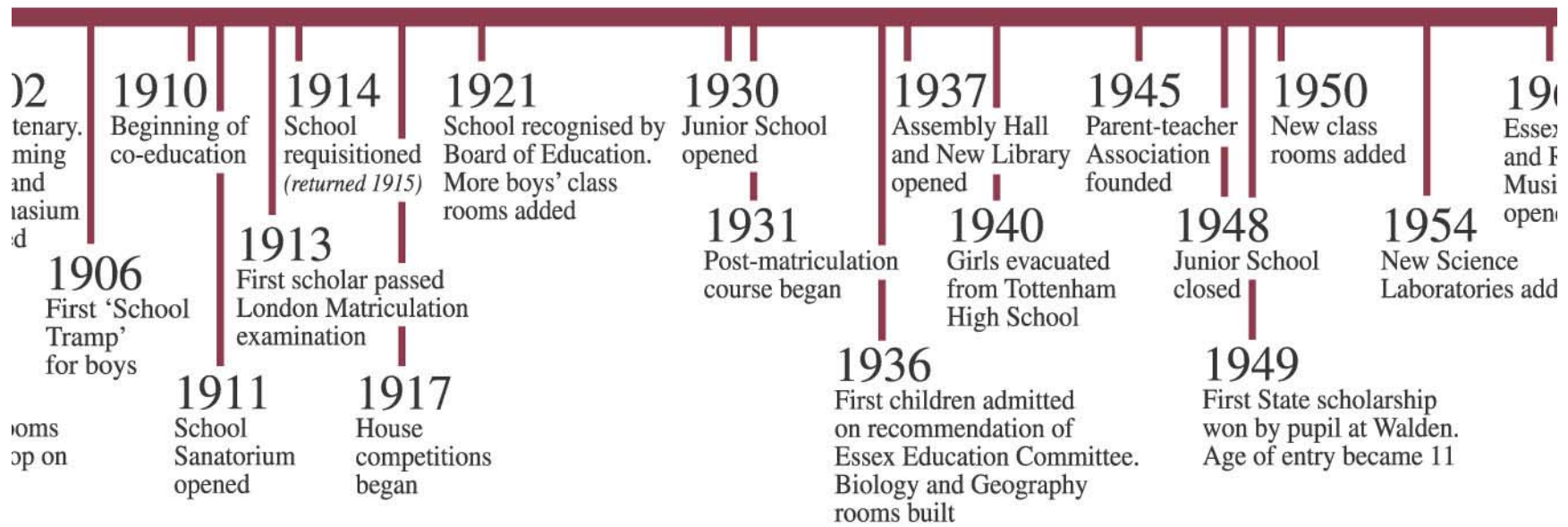


1925
*A view of the
Dining Hall*



1911
*The School Sanatorium
opened. In 1966 the
building became the Junior
Boys House (Gibson), and
in 1992 opened as the
Gibson House Junior School*





1925
A view of the Dining Hall



1952
Gateway to the past pageant performed by pupils from Friends' on the 250th anniversary of the school

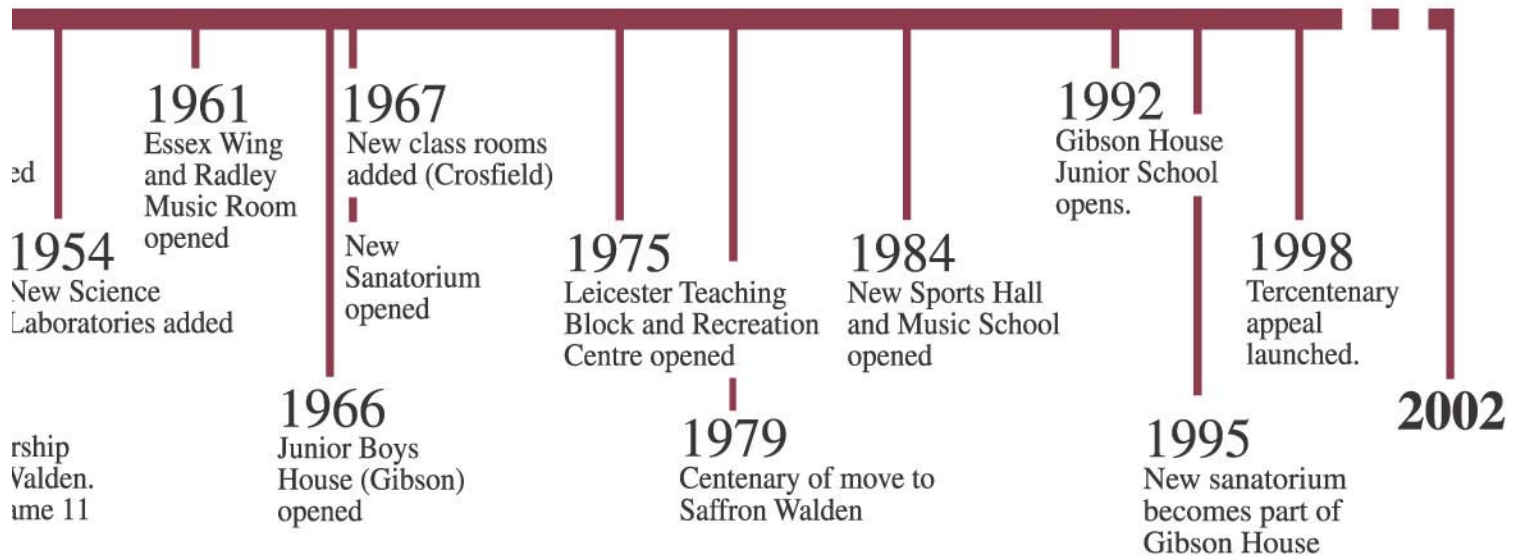


1950's
The Avenue and the tradition of kicking the stone



1960's
General aerial view of the rear of the school





w of
ool



1975
*The formal opening of Leicester building.
The entrance gates were the original
gates to the Croydon School*



1984
*New Sports Hall
and Music School
opened*

